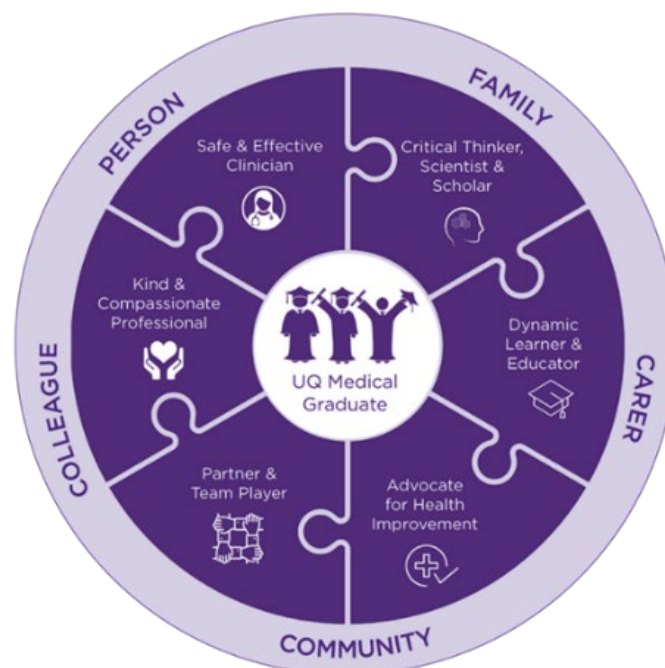


# UQ MD DESIGN

## Expression of Interest: Working Group Membership

4 February 2021

The MD Design project is now embarking on the Stage 2 of the design process – the Detailed Design of the curriculum. Six primary roles of the future UQ MD graduate have been identified (Figure 1), which are integral to the high level design. These six roles together make up the entire portfolio for the fully fledged UQ MD Graduate and will be the themes of the new curriculum.



*Figure 1: Six Roles of the UQ Medical Graduate*

In this context, a series of 8 Working Groups will be established to progress with the detailed design of each of the themes of the program. The Working Groups will be led by Theme Leads who will be part of the overarching Project Working Group for the MD Design (see Figure 2 overleaf).

A formal recruitment process is underway to appoint leads for each of these program themes (Theme Leads). **In addition, we are seeking expressions of interest and nominations from across our broader MD Program community and beyond to join a working group.**

The following provides a brief summary of the focus of each of the working groups being established as well as a summary of the responsibilities of working group members. This is a unique opportunity to be involved in a major curriculum review and we are asking you to nominate keen, enthusiastic people who have a passion for educating future doctors.

## Working Groups

8 working groups are being established – each with their own Theme Lead. The focus of each of the working groups is to develop appropriately staged learning outcomes and learning activities for their key theme over the four years of the UQMD Program and to work collaboratively with the other Themes to promote meaningful integration, a cohesive four year curriculum and a whole of program approach to assessment.

It is **intended that each group have up to 8 members** to support effective group work and individual contribution.

Theme / Working Group	Theme Lead
Advocate for Health Improvement	A/ Professor Linda Selvey
Critical Thinker, Scientist and Scholar – Research	Professor Di Eley
Critical Thinker, Scientist and Scholar – Biomedical Sciences	Professor Mark Midwinter
Assessment	A/Professor Helen Wozniak
Safe and Effective Clinician	TBC – Recruitment underway
Kind and Compassionate Professional	TBC – Recruitment underway
Dynamic Learner and Educator*	TBC – Recruitment underway
Partner and Team Player*	TBC – Recruitment underway

*\*It is anticipated that the Dynamic Learner and Educator and Partner and Team Player working groups will share a Theme Lead.*

## Responsibilities of Working Group Members

The workload for Working Group members will fluctuate but is estimated to be on average 2-3 hours per week over the balance of 2021.

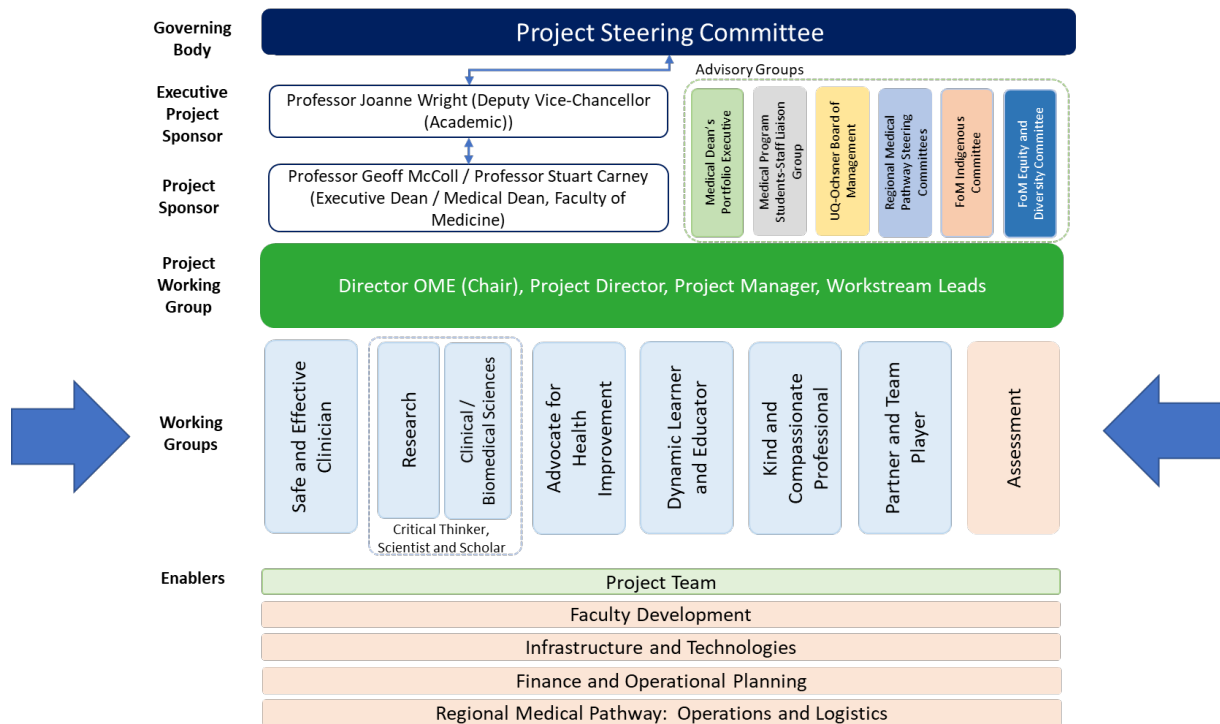
Working Group members will be required to contribute for a 12 month (minimum) period. *It is anticipated that working group members will incorporate their working group responsibilities into their existing roles (and that membership of a working group will not represent a change in employment arrangements).*

Specific responsibilities for Working Group members are as follows:

- Participating actively in regular working sessions on their specific design theme (frequency may vary but likely to be fortnightly meetings initially)
- Contributing to the drafting, reviewing and refining of the staged learning outcomes for each year of the program
- Progressing other design tasks as identified by the Theme Lead and discussions of the Working Group (e.g. desk top research into comparators or better practices; follow up discussions with colleagues on specific issues)
- Contributing to the design of appropriate learning and teaching activities to support the learning outcomes and whole of program assessment
- Identifying relevant and appropriate assessment tasks (in collaboration with the Assessment Working Group)
- Contributing to discussions on future resource requirements and operational considerations
- Being a champion for the new MD and contributing to successful change

## Project Governance and Work Organisation

The governance and work organisation for the detailed design will include a Project Working Group made up of the Director, OME (Chair) as well as the Project team and Theme Leads. The 8 working groups will all feed into the Project Working Group. There will also be a number of key enablers that will be required to help progress and support the design process.



## Next Steps

If you would like to nominate to be on a working group, please email the project team at [med.md-design@uq.edu.au](mailto:med.md-design@uq.edu.au) by Friday 19<sup>th</sup> February 2021.

Please indicate in your email what particular working group(s) you are interested in joining.