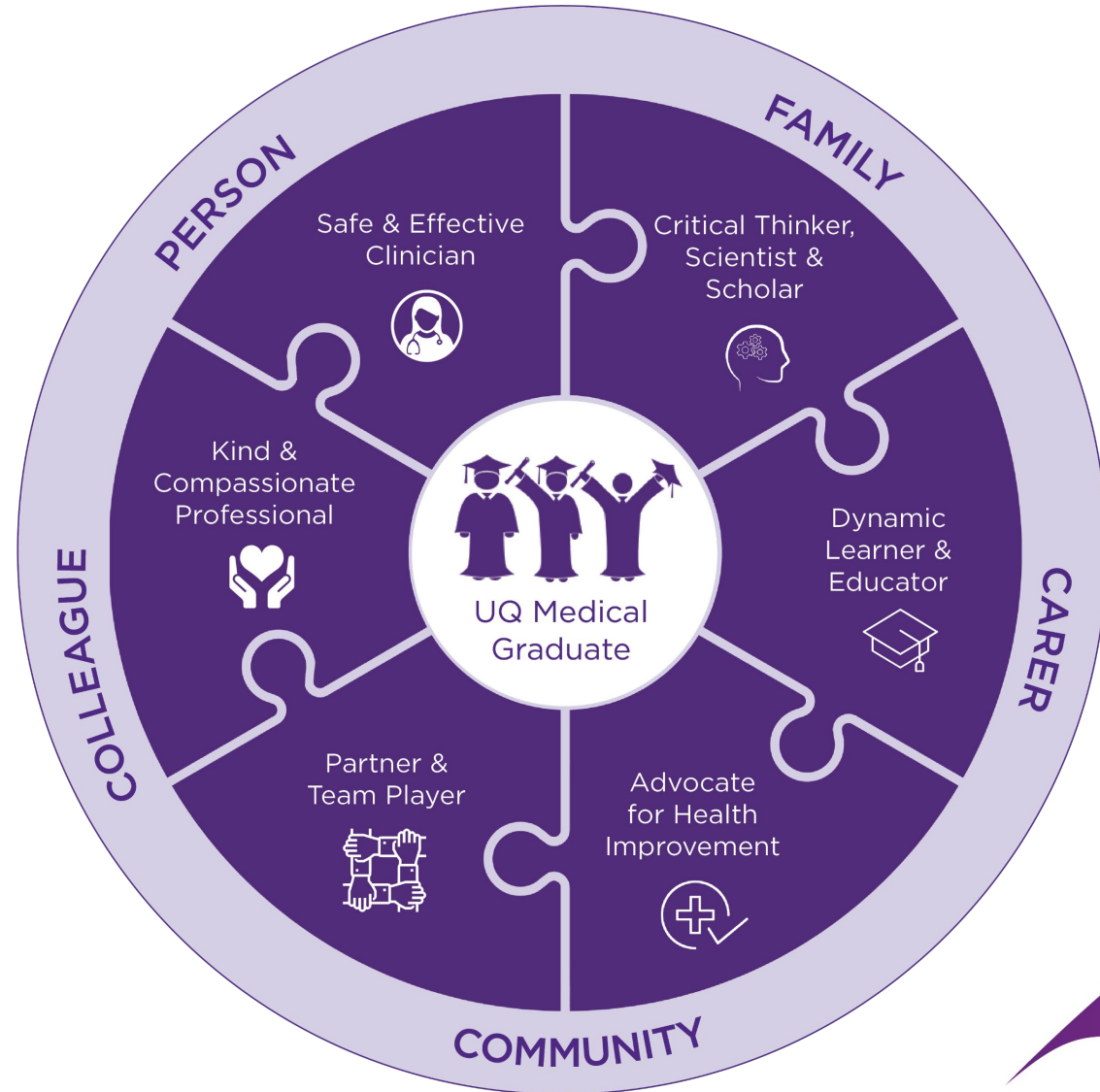




# MD DESIGN

Theme Working Group  
Members, 2021



# Advocate for Health Improvement

## *Theme Lead - Associate Professor Linda Selvey*

- Public Health Physician and Infectious Diseases Epidemiologist
- Course Coordinator - Health, Society and Research 1, School of Public Health

## Members:

### **Associate Professor Deborah Askew**

- Primary Health Care Researcher, Conjoint Appointment – University of Queensland and the Southern Qld Centre of Excellence in Aboriginal & Torres Strait Islander Primary Health Care (COE-Inala)
- Principal Research Fellow, Primary Care Clinical Unit

### **Mr Condry Canuto**

- Senior Lecturer in Public Health, School of Public Health

### **Dr Rachel Claydon**

- General Practitioner
- Course Coordinator - Workplace Learning Portfolio, Office of Medical Education

### **Associate Professor Lisa Fitzgerald**

- Associate Professor, School of Public Health

### **Dr Bryan Mukandi**

- ARC DECRA Research Fellow, School of Languages and Cultures

### **Associate Professor Allyson Mutch**

- Associate Professor in Health Systems, School of Public Health

### **Dr John Ridler**

- Rural General Practitioner
- Course Coordinator - Rural and Remote Medicine, Rural Clinical School

### **Dr Isaac Tranter**

- Academic Registrar, Primary Care Clinical Unit

*Theme Lead - Associate Professor Helen Wozniak*

- Academic Lead for Assessment, Office of Medical Education

## Members:

### **Dr Claire Ellender**

- Sleep and Respiratory Physician
- Year 3 Academic Lead, Medicine, PA Hospital-Southside Clinical Unit

### **Dr Christy Noble**

- Affiliate Senior Lecturer, School of Pharmacy, UQ
- Clinical Learning & Assessment Lead, Office of Medical Education

### **Dr Iulia Oancea**

- Course Coordinator - Year 2 Integrated Clinical Studies, St Lucia Clinical Unit

### **Dr Simon Ryder**

- Consultant Endocrinologist
- Course Coordinator - Medical Specialities, School of Clinical Medicine

### **Mrs Amica Schrader**

- Course Administrator – Paediatrics, Office of Medical Education

### **Associate Professor Nancy Sturman**

- General Practitioner
- Acting Head, Mayne Academy of Primary Care

### **Ms Kym Ward**

- eLearning Manager, Office of Medical Education

# Critical Thinker, Scientist and Scholar

## *Theme Lead – Professor Mark Midwinter*

- Professor of Clinical Anatomy
- Deputy Head of School, School of Biomedical Sciences

## Members:

### **Dr Lisa Buckley**

- Senior Lecturer in Health Promotion, School of Public Health

### **Professor Elizabeth Coulson**

- Group Leader in Dementia Research, Clem Jones Centre for Ageing Dementia Research & Professor Queensland Brain Institute
- Head of School, School of Biomedical Sciences

### **Associate Professor Lisa Hall**

- Associate Professor in Epidemiology, School of Public Health

### **Associate Professor Lindy Jeffree**

- Neurosurgeon, Royal Brisbane and Women's Hospital
- Academic Title Holder, Royal Brisbane Clinical Unit

### **Dr David King**

- General Practitioner
- Course Coordinator - General Practice, Primary Care Clinical Unit

### **Dr Joan Li**

- Postdoctoral Research Fellow, Australian Institute for Bioengineering and Nanotechnology
- Course Coordinator - Clinical Sciences 3, School of Biomedical Sciences

### **Dr Suja Pillai**

- Lecturer, Pathology, School of Biomedical Sciences

# Critical Thinker, Scientist and Scholar (*Research*)

*Theme Lead (Research) – Professor Di Eley*

- Director, Research Strategy and Support, Office of Medical Education

## Members:

### **Associate Professor Susan Jordan**

- Cancer Epidemiologist
- Course Coordinator - Health, Society and Research 2, School of Public Health

### **Dr David King**

- General Practitioner
- Course Coordinator - General Practice, Primary Care Clinical Unit

### **Dr Megan Steele**

- Research Scientist, Queensland Centre for Mental Health Research
- Course Coordinator - Foundations of Medical Research, Office of Medical Education

### **Ms Chloe Yap**

- PhD Candidate and Fulbright Scholar
- MD Candidate, UQ Doctor of Medicine

# Dynamic Learner and Educator

*Theme Lead (Research) – Associate Professor Calvin Smith*

- Academic Lead for Staff Development, Office of Medical Education

## Members:

### **Ms Jules Bennet**

- Lead Clinical Educator, Rural Clinical School

### **Dr Amalie Dyda**

- Infectious Disease Epidemiologist
- Senior Lecturer in Epidemiology, School of Public Health
- Course Coordinator - Health, Society and Research 3, School of Public Health

### **Dr Christian Gray**

- Course Coordinator - Preparation for USMLE Step 1, St Lucia Clinical Unit

### **Dr William McGahan**

- Oncology Research Fellow, Princess Alexandra Hospital
- Academic Registrar, General Surgery, PA Hospital-Southside Clinical Unit

### **Dr Rory Melville**

- General Practitioner
- Senior Lecturer, General Practice, Primary Care Clinical Unit

### **Ms Kim Parry**

- Student Coordinator, Royal Brisbane Clinical Unit

### **A/Professor Alan Sandford**

- Director, Medical Academic Development, Central Queensland Hospital and Health Service and Wide Bay Hospital and Health Service

### **Mr Wayne Williams**

- Coordinator, Indigenous Health Curriculum, Rural Clinical School

# Kind and Compassionate Professional

*Theme Lead – Dr Charley Greentree*

- Emergency Physician, St Vincent's Hospital Toowoomba

## Members:

### **Ms Ellice Ablitt**

Team Leader, Mater and Child Health Clinical Units

### **Dr Georgiana Antoce**

- Consultant Psychiatrist
- Senior Lecturer, School of Clinical Medicine

### **Ms Jo Cabot**

- Team Leader, Hervey Bay, Rural Clinical School

### **Dr Michael Devlin**

- Emergency Physician, QEII Hospital
- Conjoint Academic Lead, QEII Hospital, PA Hospital-Southside Clinical Unit

### **Associate Professor Jennifer Fitzgerald**

- Clinical Psychologist
- Clinical Lead Educator, St Lucia Clinical Unit

### **Dr Liam Flynn**

- General Practitioner
- Academic Lead - Rural & Remote Medicine, Rural Clinical School

### **Dr Margaret Kay**

- General Practitioner
- Senior Lecturer, Primary Care Clinical Unit

### **Dr Thomas Knowlman**

- Medical Registrar, Mater Health Services, Mater and Child Health Clinical Units

### **Dr Johanna Lynch**

- General Practitioner
- Senior Lecturer, Primary Care Clinical Unit

# Partner and Team Player

## *Theme Lead – Dr Michaela Kelly*

- General Practitioner
- Course Coordinator - Medicine in Society, Primary Care Clinical Unit

## Members:

### **Emeritus Professor Peter Baker**

- Former Head of Clinical School, Rural Clinical School

### **Dr Alison Green**

- General Practitioner
- Senior Lecturer, General Practice, Primary Care Clinical Unit

### **Ms Susana Jackson**

- Course Administrator - Medicine and Medical Specialities, Office of Medical Education

### **Dr Pieter Jansen**

- Endocrinologist, Princess Alexandra Hospital
- Course Coordinator - Clinical Sciences 1, St Lucia Clinical Unit

### **Emeritus Professor Geoff Mitchell**

- Professor of General Practice and Palliative Care, Primary Care Clinical Unit

### **Dr Jenny Munro**

- Medical Anthropologist, School of Social Sciences

### **Dr Greg Parker**

- Director, Metro South Palliative Care Services
- Palliative Care Specialist, PA Hospital-Southside Clinical Unit

### **Dr Salih Salih**

- Geriatrician
- Academic Lead, Redland Hospital, Princess Alexandra Hospital Southside Clinical Unit

### **Ms Belinda Swyny**

- Registered Nurse, Interprofessional and Medical Simulation Education Specialist
- Lecturer, Medical Simulation, St Lucia Clinical Unit



# Safe and Effective Clinician

*Theme Lead – Associate Professor Warrick Inder*

- Endocrinologist, Princess Alexandra Hospital

## Members:

### **Associate Professor Jenny Barry**

- Psychiatrist and Academic Title Holder, Rural Clinical School

### **Dr Samuel Chan**

- Staff Specialist, Metro South Integrated Nephrology and Transplant Services
- Course Coordinator – Medicine, School of Clinical Medicine

### **Ms Alys Cottrill**

- Student Coordinator, PA Hospital-Southside Clinical Unit

### **Associate Professor Greg Duncombe**

- Clinical Director, Maternal Fetal Medicine, Sunshine Coast Hospital and Health Service
- Academic Title Holder, Royal Brisbane Clinical Unit

### **Associate Professor Wendy Findlay**

- Neurosurgeon, Royal Brisbane and Women's Hospital
- Head of Clinical Unit, Royal Brisbane Clinical Unit

### **Professor Ian Scott**

- Director of Internal Medicine and Clinical Epidemiology, Princess Alexandra Hospital
- Professor of Clinical Decision Making, PA Hospital-Southside Clinical Unit

### **Associate Professor Katharine Wallis**

- General Practitioner
- Head of Clinical Unit, Primary Care Clinical Unit

### **Dr Nicola Warren**

- Psychiatrist, Metro South Addiction and Mental Health Services
- Lecturer, Psychiatry, PA Hospital-Southside Clinical Unit

### **Mr Ian Wilkins**

- Student Coordinator, Mater and Child Health Clinical Units